

DO NOT SCALE FROM THIS PRINT

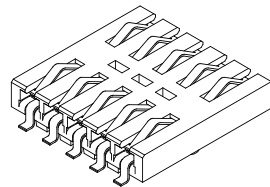
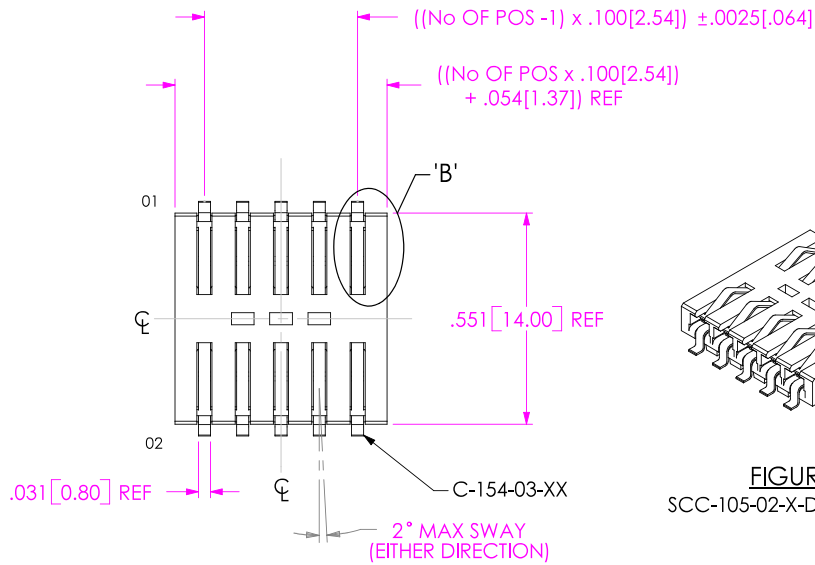
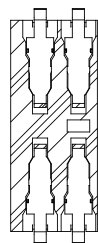
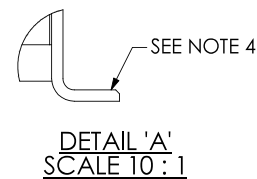
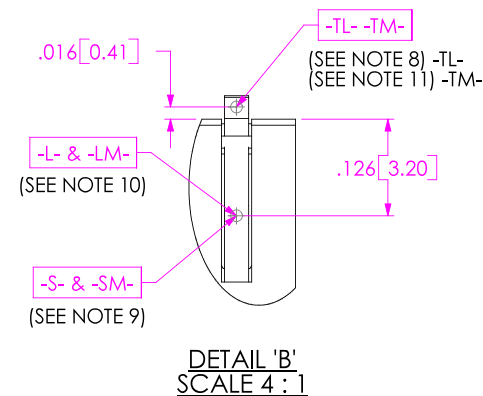
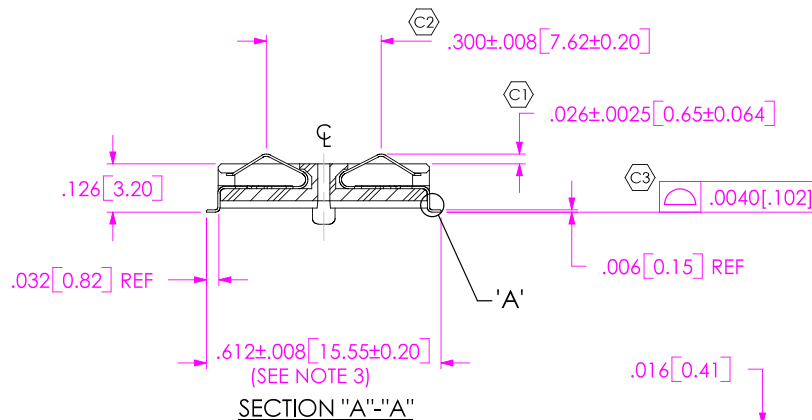
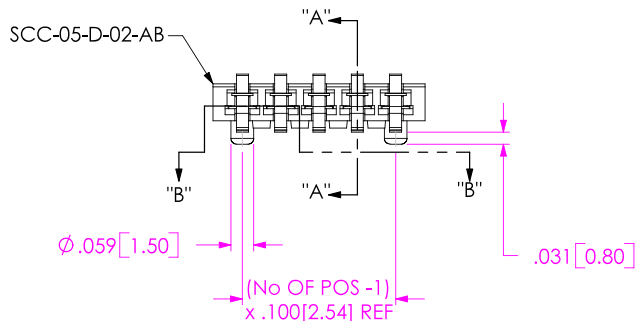


FIGURE 1  
SCC-105-02-X-D-AB SHOWN

SCC-1XX-XX-XX-X-XX-XX

- No OF POSITIONS**  
-03, -04, -05 (PER ROW)
- LEAD STYLE**  
-02: 3.0mm HEIGHT
- ALIGNMENT PIN**  
-AB: BOTTOM SIDE (USE SCC-XX-D-XX-AB-XX)
- ROW SPECIFICATION**  
-D: DOUBLE
- PLATING SPECIFICATION**  
-L: LIGHT SELECTIVE GOLD (SEE NOTES 8 & 10) (USE C-154-03-L)  
-S: SELECTIVE GOLD (SEE NOTES 8 & 9) (USE C-154-03-S)  
-LM: SELECTIVE LIGHT GOLD, MATTE TIN (SEE NOTES 10 & 11)  
-SM: SELECTIVE HEAVY GOLD, MATTE TIN TAIL (SEE NOTES 9 & 11)
- OPTIONS**  
-TR: TAPE & REEL PACKAGING



SECTION "B"-"B"

NOTES:

1. REPRESENTS A CRITICAL DIMENSION.
2. NOTE DELETED.
3. SHEAR TAILS TO DIMENSION SHOWN.
4. MAXIMUM BURR: .004 [.10] ALLOWED ON THIS SIDE ONLY.
5. ALL PARTS TO BE TUBED UNLESS OTHERWISE SPECIFIED.
6. CONTACT RETENTION: 8 OZ. MINIMUM.
7. ALL DIMENSIONS TO BE SYMMETRICAL ABOUT CENTERLINE WITHIN  $\pm .0020[.051]$ .
8. -TL: TIN/LEAD SHALL BE .000075-.000250 Sn/Pb (90/10/ $\pm 5\%$ ) PER MIL-T-10727, TYPE 1, OVER .000050-.000150 NICKEL PER QQ-N-290, CLASS 1, MEASURED AT -TL-
9. -S: GOLD SHALL BE .000030-.000040 GOLD PER MIL-G-45204B, TYPE 2, GRADE C, OVER .000050-.000150 NICKEL PER QQ-N-290, CLASS 1, TO BE MEASURED AT -S-
10. -L: GOLD SHALL BE .000010 MINIMUM GOLD PER MIL-G-45204B, TYPE 2, GRADE C, OVER .000050-.000150 NICKEL PER QQ-N-290, CLASS 1, TO BE MEASURED AT -L-
11. -TM: MATTE TIN SHALL BE .000100-.000250 PER ASTM 545-B, OVER .000050-.000120 NICKEL PER QQ-N-290, CLASS 1, MEASURED AT -TM-

UNLESS OTHERWISE SPECIFIED, DIMENSIONS ARE IN INCHES.  
TOLERANCES ARE:  
DECIMALS ANGLES  
.XX:  $\pm .01$  [.3] 2°  
.XXX:  $\pm .005$  [.13]  
.XXXX:  $\pm .0020$  [.051]

PROPRIETARY NOTE

THIS DOCUMENT CONTAINS INFORMATION CONFIDENTIAL AND PROPRIETARY TO SAMTEC, INC. AND SHALL NOT BE REPRODUCED OR TRANSFERRED TO OTHER DOCUMENTS OR DISCLOSED TO OTHERS OR USED FOR ANY PURPOSE OTHER THAN THAT WHICH IT WAS OBTAINED WITHOUT THE EXPRESSED WRITTEN CONSENT OF SAMTEC, INC.

**SAMTEC**

520 PARK EAST BLVD, NEW ALBANY, IN 47150  
PHONE: 812.944.6733 FAX: 812.948.5047  
e-Mail: [INFO@SAMTEC.COM](mailto:INFO@SAMTEC.COM) CODE: 55322

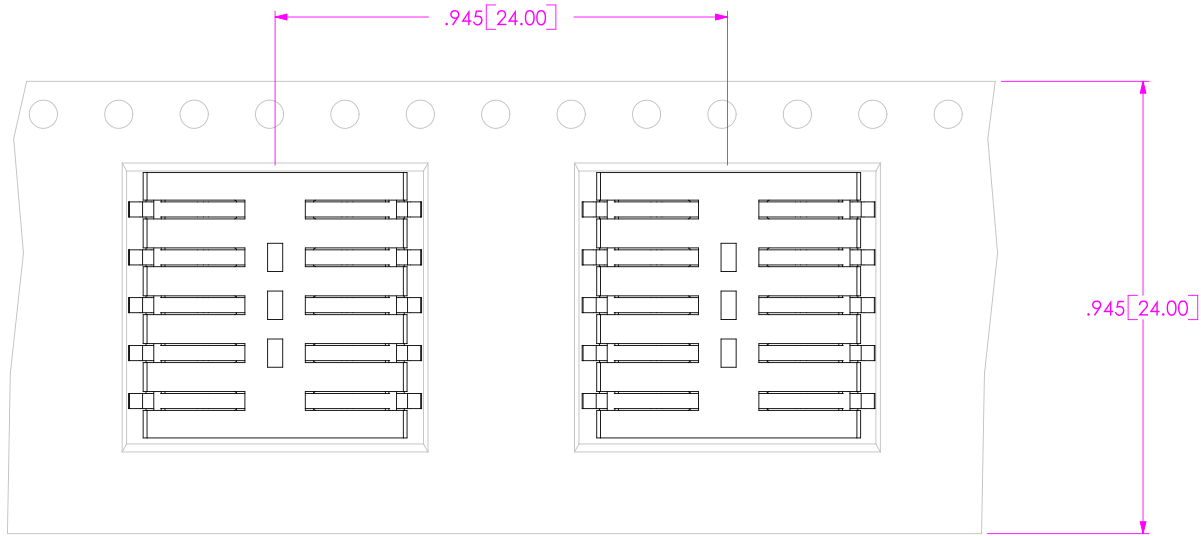
MATERIAL: DO NOT SCALE DRAWING SHEET SCALE: 2:1  
INSULATOR: LCP, COLOR: BLACK  
CONTACT: PHOS BRONZE

DESCRIPTION: SMART CARD CONNECTOR ASSEMBLY

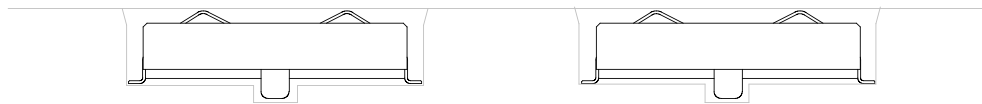
DWG. NO. SCC-1XX-XX-XX-X-XX-XX

BY: G.W. ANG 12/15/99 SHEET 1 OF 2

-TR: TAPE & REEL PACKAGING

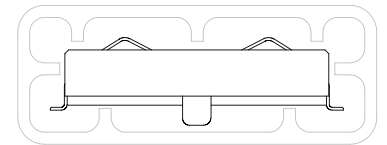


USER DIRECTION OF UNREELING  
POCKET NOT DETAILED →



TOTAL PARTS PER REEL: 625

PACKAGING VIEW



TUBE: PT-1-24-01-114  
PLUG: TP-09

**PROPRIETARY NOTE**

THIS DOCUMENT CONTAINS INFORMATION CONFIDENTIAL AND PROPRIETARY TO SAMTEC, INC. AND SHALL NOT BE REPRODUCED OR TRANSFERRED TO OTHER DOCUMENTS OR DISCLOSED TO OTHERS OR USED FOR ANY PURPOSE OTHER THAN THAT WHICH IT WAS OBTAINED WITHOUT THE EXPRESSED WRITTEN CONSENT OF SAMTEC, INC.

DO NOT SCALE DRAWING

SHEET SCALE: 2.5:1

**SAMTEC**

520 PARK EAST BLVD, NEW ALBANY, IN 47150  
PHONE: 812.944.6733 FAX: 812.948.5047  
e-Mail: [INFO@SAMTEC.COM](mailto:INFO@SAMTEC.COM) CODE: 55322

DESCRIPTION:  
SMART CARD CONNECTOR ASSEMBLY

DWG. NO. **SCC-1XX-XX-XX-X-XX-XX**

BY: G.W. ANG 12/15/99 SHEET 2 OF 2